



St Georges Lane North, Worcester, WR1 1RG

Ref: 29168420

Offers in Region Of
£58,000

A second floor apartment with views over communal grounds. Offered for sale with no chain & for the over 55's & walking distance of the city centre.

Telephone: 01905 616330
Email: info@sheltonandlines.co.uk
37 Droitwich Road, Worcester, WR3 7LG

 **Shelton & Lines**
ESTATE AGENTS

Gallery



Telephone: 01905 616330
Email: info@sheltonandlines.co.uk
37 Droitwich Road, Worcester, WR3 7LG



Property Description

From the reception hallway is the residents lounge & hallways providing access to the stairs or lifts to the top floor. This one bedroom apartment comprises; entrance door into the hallway with door into the living room, bedroom, shower room & useful cupboard. From the living room is a feature fireplace & with an 'Adam' surround. From the lounge is the access into the kitchen area, which has a range of base & wall units, cooker, sink & drainer & fridge/freezer.

The bedroom has a built in wardrobe. The shower room has been re-fitted & has a shower cubicle, W.C & wash basin.

Externally, there is residents parking on a first come, first served basis & use of the residents grounds.

There is a local shop within a short walk of the property, as well as Gheluvelt Park & a bus stop with direct access into the centre. Worcester itself has a wide range of amenities to include restaurants, bars, pubs, cafes, shops, supermarkets & leisure facilities.

Worcester has two train stations with direct links to London & the M5, J6 is a short drive away.

LEASEHOLD

Council Tax Band B - Worcester Council

Ground rent £219 every 6 months

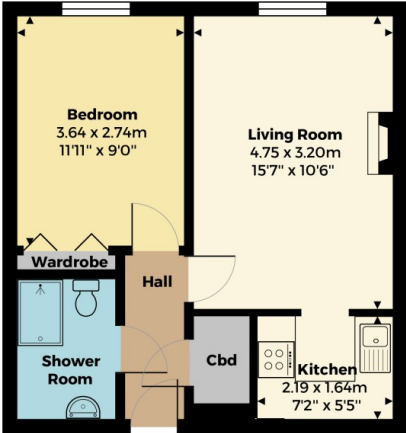
Service charge £1446 every 6 monthly.

87 years on lease.

Agents Note - Please note that a Buyers Fee of £950 including VAT is payable at the point of an offer being accepted to Shelton & Lines – for terms and conditions please see Shelton & Lines website under the Sales Tab and "Buyer's Info" page.

General Information - Whilst we endeavour to make our sales particulars fair, accurate and reliable, they are only a general guide to the property. Accordingly, if there is any point which is of particular importance to you please contact the office and we will be pleased to check the position for you, especially if you are travelling some distance to view the property. **FIXTURES AND FITTINGS** All items not specifically mentioned within these details are to be excluded from the sale. Any mention of services/appliances within these details does not imply they are in full and efficient working order and no testing has been done by the Agent.

FloorPlans



Second Floor

All measurements are approximate and for display purposes only