



Bromsgrove Street, Barbourne, Worcester, WR3 8AR

£189,950

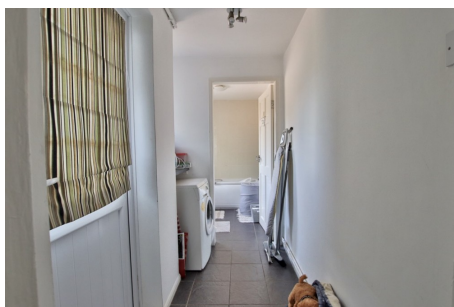
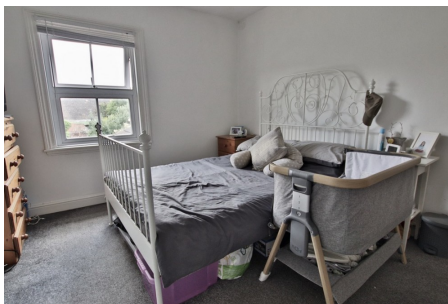
Ref: 26412310

The front door bring you directly into your lounge where a small inner hallway takes you into the modern kitchen/diner, also off the hallway is access to the cellar. To the rear of the kitchen/diner is the utility area which leads to the bathroom, the utility area also gives access to the rear garden.

Telephone: 01905 616330
Email: info@sheltonandlines.co.uk
37 Droitwich Road, Worcester, WR3 7LG

 **Shelton & Lines**
ESTATE AGENTS

Gallery



Property Description

A two bedroom, mid terraced home situated in Barbourne with all local amenities close by, and also within walking distance of the City Centre.

On the first floor there are two double bedrooms.

Council Tax Band B - Worcester Council

Living Room - 10' 4" x 9' 9" (3.15m x 2.97m)

Kitchen/Dining Room - 10' 4" x 11' 9" (3.15m x 3.58m)

Utility Area - 7' 6" x 5' 7" (2.29m x 1.70m)

Downstairs Bathroom

Bedroom 1 - 10' 4" x 12' 0" (3.15m x 3.66m)

Bedroom 2 - 10' 4" x 9' 9" (3.15m x 2.97m)

Agents Note - Please note that a Buyers Fee of £480 including VAT is payable at the point of an offer being accepted to Shelton & Lines – for terms and conditions please see Shelton & Lines website under the Sales Tab and "Buyer's Info" page.

General Information - Whilst we endeavour to make our sales particulars fair, accurate and reliable, they are only a general guide to the property. Accordingly, if there is any point which is of particular importance to you please contact the office and we will be pleased to check the position for you, especially if you are travelling some distance to view the property. **FIXTURES AND FITTINGS** All items not specifically mentioned within these details are to be excluded from the sale. Any mention of services/appliances within these details does not imply they are in full and efficient working order and no testing has been done by the Agent.

Telephone: 01905 616330

Email: info@sheltonandlines.co.uk

37 Droitwich Road, Worcester, WR3 7LG



FloorPlans



Whilst every attempt has been made to ensure the accuracy of the floorplans contained herein, measurements of doors, windows, rooms and any other items are approximate and no responsibility is taken for any error, omission or mis-statement. This plan is for illustrative purposes only and should be used as such for any prospective purchase. The accuracy, systems and equipment shown here are not tested and the guarantee as to their operability or efficiency can be given.
Made with Metreplan 12/23