

St Georges Lane North, Barbourne, Worcester, WR1 1RG

Ref: 28467580

A retirement apartment located on the first floor with views over the communal gardens, set in a prestigious and convenient location north of Worcester city centre, close to good transport links and local amenities. Offered with no onward chain.

Offers Over
£60,000

Telephone: 01905 616330
Email: info@sheltonandlines.co.uk
37 Droitwich Road, Worcester, WR3 7LG

 **Shelton & Lines**
ESTATE AGENTS

Gallery



Telephone: 01905 616330
Email: info@sheltonandlines.co.uk
37 Droitwich Road, Worcester, WR3 7LG



Property Description

The accommodation comprises of an security door into the reception/welcome area & residents lounge, with stairs or a lift up to your first floor apartment. From your front door is an entrance hall, leading through to the sitting/dining room, a kitchen, a double bedroom and a bathroom. Other benefits include lift access, residential parking, stunning communal gardens, relaxing lounge areas, an on-site manager, electric heating and double glazing.

There is a suite for residents to host their guests, should they wish to stay over night, a house manager, residents parking on a first come, first served basis, communal gardens, electric heating, double glazing & wall mounted alarm points via pull-cords, in case of emergency.

The home is convenient for a Sainsburys Local & several cafes & pubs, as well as being on the bus route in to the city. It is walking distance of the high street & of Foregate Street train station, which has links to London stations.

The M5 is also a short drive away, as well as close to Lansdowne & Gheluvelt Park.

Worcester has a wide range of amenities to include restaurants, bars, cafes, pubs & shops. There are river side walks, National Trust properties & the historic cathedral.

LEASEHOLD

For the over 60's

Lease: 125 years from 1987

Service Charge £2,143.56

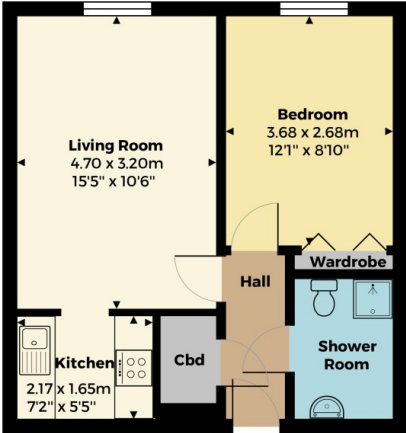
Ground Rent - £429.30

Council Tax Band B - Worcester Council

Agents Note - Agents Note - Please note that a Buyers Fee of £950 including VAT is payable at the point of an offer being accepted to Shelton & Lines – for terms and conditions please see Shelton & Lines website under the Sales Tab and "Buyer's Info" page.

General Information - General Information - Whilst we endeavour to make our sales particulars fair, accurate and reliable, they are only a general guide to the property. Accordingly, if there is any point which is of particular importance to you please contact the office and we will be pleased to check the position for you, especially if you are travelling some distance to view the property. **FIXTURES AND FITTINGS** All items not specifically mentioned within these details are to be excluded from the sale. Any mention of services/appliances within these details does not imply they are in full and efficient working order and no testing has been done by the Agent.

FloorPlans



First Floor

All measurements are approximate and for display purposes only